

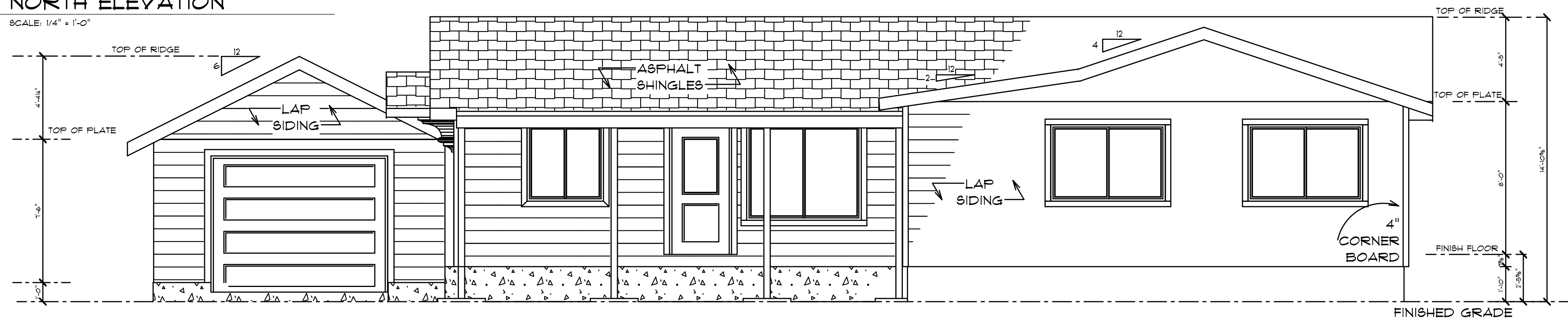
7 EAST ELEVATION
SCALE: 1/4" = 1'-0"

8 WEST ELEVATION
SCALE: 1/4" = 1'-0"

ALL ROOF PITCHES SCALED FROM PLAN AND MAY VARY FROM THE ACTUAL HOME AS BUILT. CONTRACTOR TO VERIFY ALL ROOF PITCHES PRIOR TO CONSTRUCTION.

SLOPE GRADE AWAY FROM BLDG.

5 NORTH ELEVATION
SCALE: 1/4" = 1'-0"



6 SOUTH ELEVATION
SCALE: 1/4" = 1'-0"

