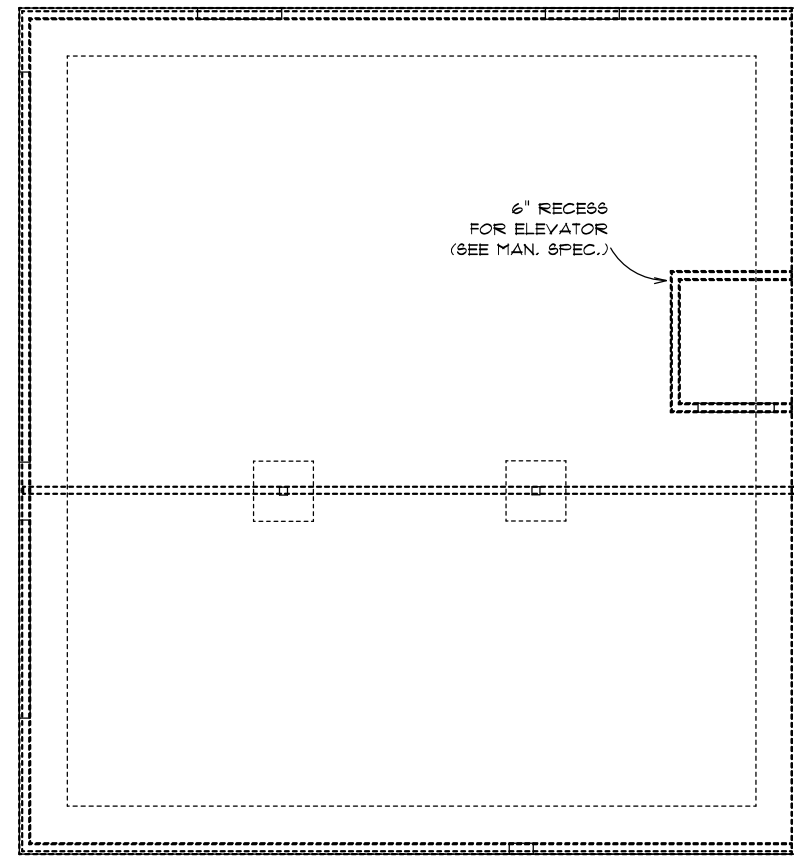


**ELECTRICAL SCHEDULE**

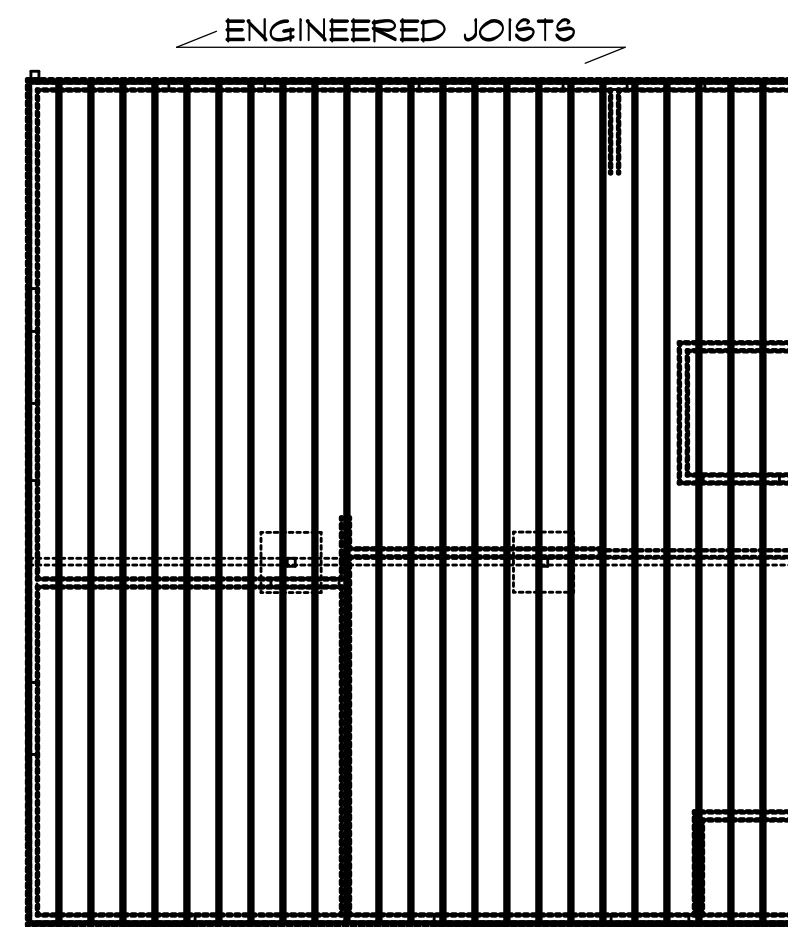
ELECTRICAL	COUNT	SYMBOL
ceiling fan spotlights 2	1	
ceiling globe light	2	
double spotlight	2	
fluorescent fixture	6	
pot light	8	
wall mount 2	2	
outlet	33	
outlet gfi	3	
switch	1	
switch 3 way	3	
switch double	2	



**FOUNDATION PLAN**

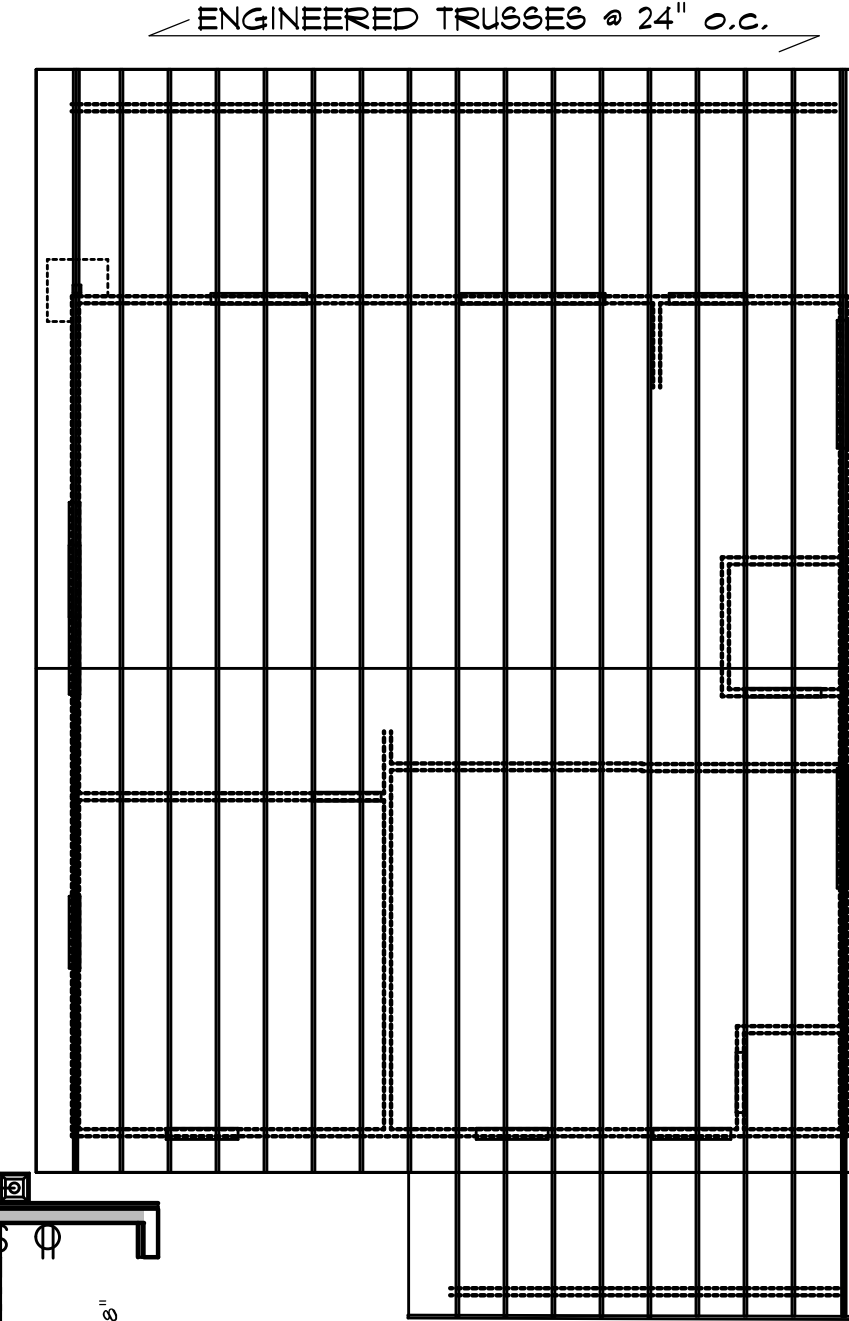
SCALE: 1/8" = 1'-0"

DETAIL: PAGE 2/6



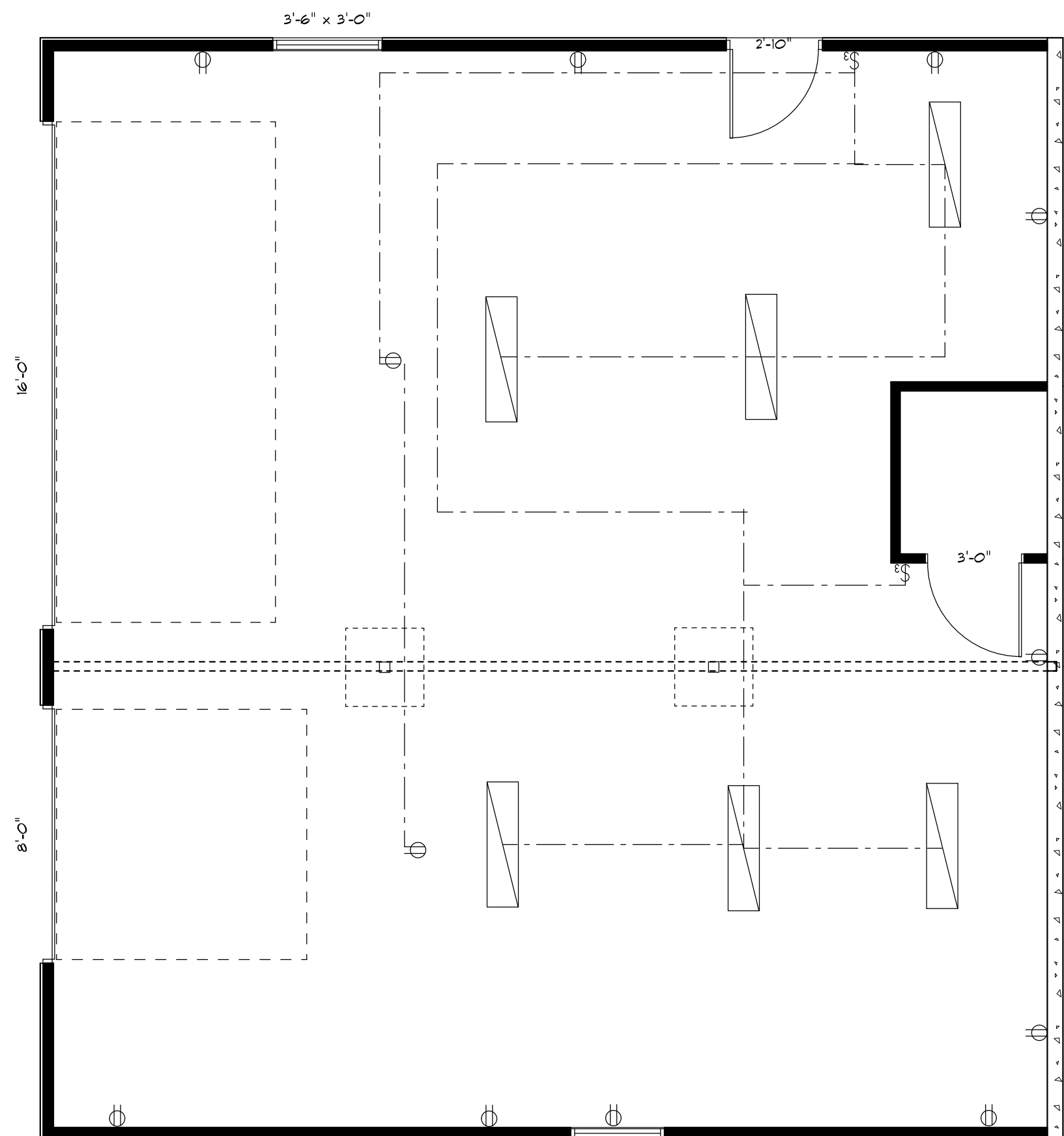
**FLOOR JOIST FRAMING PLAN**

SCALE: 1/8" = 1'-0"



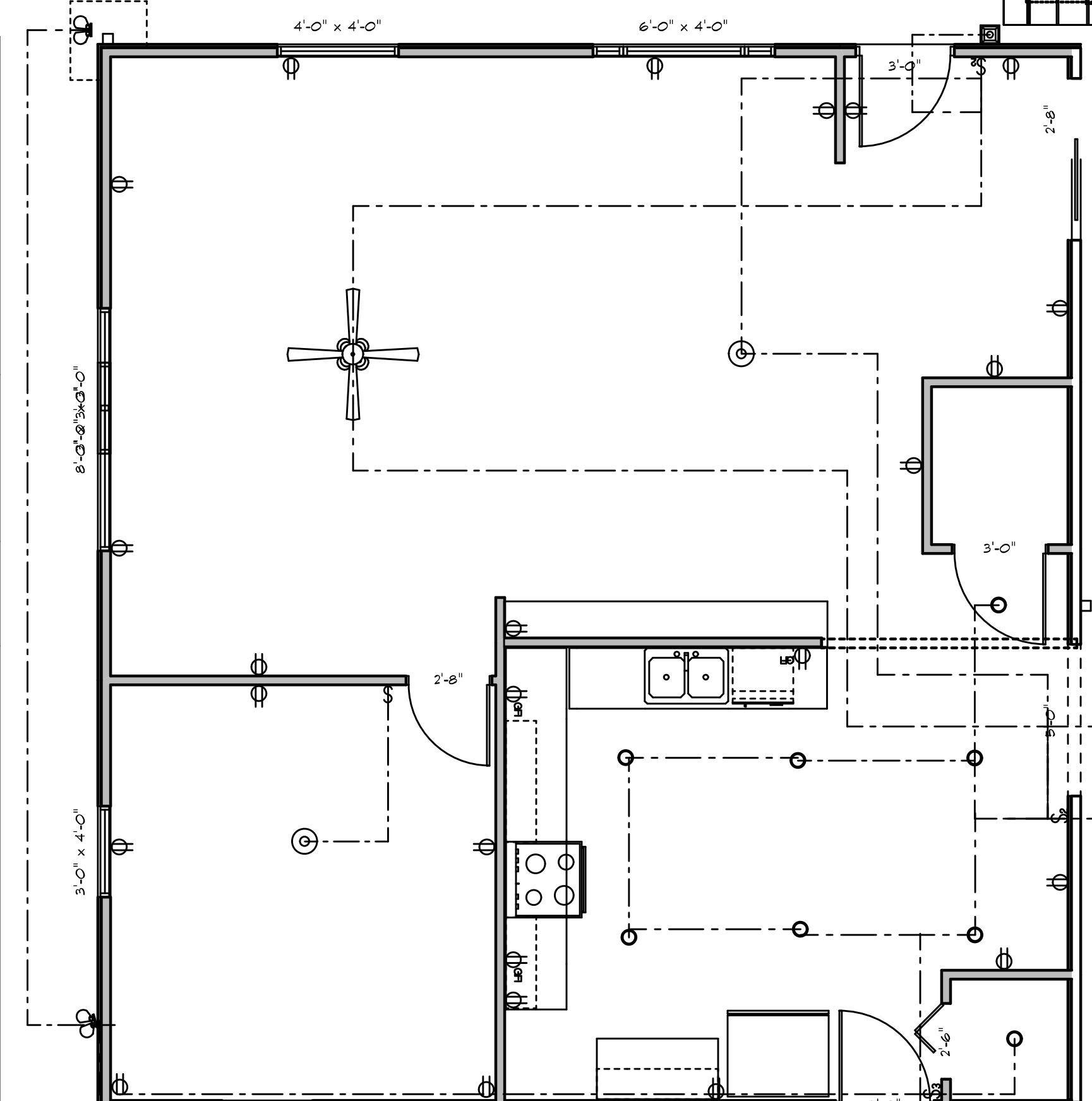
**ROOF PLAN**

SCALE: 1/8" = 1'-0"



**ELECTRICAL PLAN - GARAGE**

SCALE: 1/4" = 1'-0"



**MAIN FLOOR ELECTRICAL PLAN**

SCALE: 1/4" = 1'-0"

**NOTES:**

- TYPICAL GARAGE FLOOR :  
4" CONCRETE SLAB c/w  
FIBRE MESH REINFORCEMENT  
6 mil POLY VAPOR BARRIER  
COMPACTED GRANULAR FILL
- TYPICAL FIRST FLOOR :  
FINISH FLOOR ON  
3/4" T&G PLYWOOD SUBFLOOR  
NAILED & GLUED  
2x10 FLOOR JOISTS @ 16" o.c. w/  
2x2 CROSS BRIDGING
- TYPICAL CEILING ASSEMBLY :  
5/8" DRYWALL  
TAPED & SANDED  
6 mil POLY V.B.  
2x6 CEILING JOISTS @ 16" o.c.  
R30 BATT INSULATION
- TYPICAL TRUSS ROOF :  
#225 ASPHALT SHINGLES  
3/4" ROOFING PLYWOOD c/w  
'H' CLIPS  
2x8 BLOCKING AT PEAK  
PRE-ENGINEERED TRUSSES @ 16" o.c.  
2x4 TRUSS BRACING  
R40 BATT INSULATION  
6 mil POLY V.B.  
5/8" CEILING BOARD  
TAPED & SANDED